

**Surface contact
temperature controller**

**Surface contact temperature controller with contact output
binary sensor in hazardous locations zones 1 and 2**

**TBR-AN-2G 0/60-U
ATEX compliant**

APPLICATION

TBR-AN-2G... for monitoring, controlling and limiting of temperatures on piping or vessels for non aggressive gas or liquid. In combination with Ex-i switch Type EXL-IRU-1 with intrinsic safe circuit the sensors may be used in hazardous areas zones 1 and 2

TECHNICAL DATAS

Type	TBR-AN-2G0/60-U
Supply	by EXL-IRU-1
Contact	dust encapsulated single micro switch
Ambient temperature	-10...+65 °C
Storage temperature	-20...+70 °C
Range	0... 60 °C adjustable inside
Hysteresis	approx. 5 +/- 1K
Enclosure	Plastic, PA reinforced, IP54
Sensor	Copper
Dimension	135 x 70 x 102 mm
Protection class	simple apparatus acc. to EN 60079-11
CE	94/9/EC (ATEX)
Includes in price	1 thermostat Type TBR-AN-2G...
Installation area	Zone 1, 2 by using the switch module Type EXL-IRU-1

suitable for
Zone 1, 2
acc. to ATEX



Ex-i CIRCUIT - TABLE 1

Operation values maximum at terminal

Simple apparatus suitable for Zone 1, 2

Only for connecting to intrinsically safe circuits with max values

Voltage	Uo	13,5 VDC
Current	Io	23 mA
Power	Po	76 mW
Capacity	Ci	0 µF
Inductivity	Li	0 mH

The maximum values must not be exceeded!

Please check your external capacities and inductivities in acc. to the length of the cable and the methode of installation

MOUNTING AND INSTALLATION

Mounting is in any posion possible. After installation fix all screws and cable entry tight.

Heating	Cooling
Contact 2 - 3 breaks when temperatur rises to the preset value	Contact 2 - 1 breaks when temperatur drop to the preset value

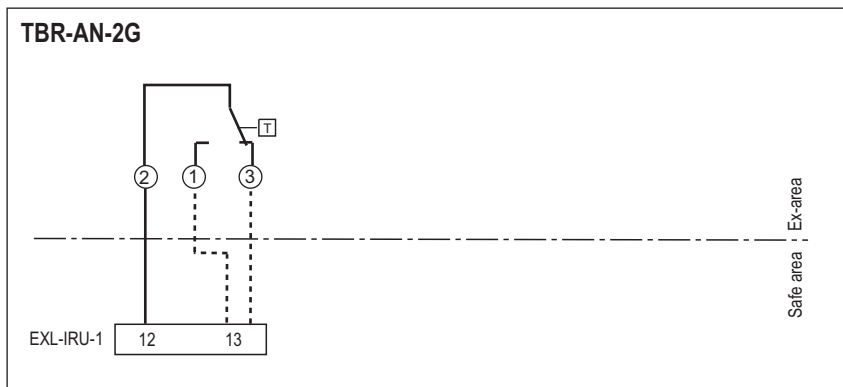
RECOMMENDED MODULE

- Switching module Mfr. Schischek Type EXL-IRU-1.
- In combination with transducer EXL-IRU-1 is intrinsic safety proof for simple circuits given.
- Manufacturer declaration zone 1 and 2.

MAINTENANCE

The thermostate is maintenance free!

ELECTRICAL CONNENCTION



ATTENTION!

- For installation, use and maintenance the official standards and rules must be applied.
- The energy of intrinsically safe circuits are below the level to start an explosion in case of a spark..
- Intrinsic safe circuits must be installed with light blue coloured and separate from non intrinsic safe circuits.
- The sensor is passiv and potential free for use in hazardous locations in zone 1, 2.
- Pay attention to the max values for wiring, listed in table 1.
- Avoid electrostatic discharge.
- Only wet cleaning.

subject to change